

pressure reduction valve

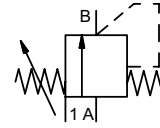
type HPP-3 15 PC


3-HPP-3 15 PC

valve type with pilot valve



control valve manuel externally controlled
pressure range PN 0-100 bar
orifice DN 15 mm
connection thread/cartridge
function manual stepless pressure regulation



 Above stated body materials refer to the valve port connections that get in contact with the media only!

design externally controlled with spring return
body materials ① aluminium ③
 ① brass ④
 ② ⑥ stainless steel
valve seat synthetic resin on metal / metal on metal
seal materials EPDM, PU, HNBR FPM

details needed for main valve

- orifice
- port
- pressure regulating range
- flow rate
- media
- media temperature
- ambient temperature

details needed for pneumatic actuation

- nominal voltage
- type of protection
- actuation pressure range min/max


| | ports | HPP-3 | with valve body G 1/2 - G 3/4 | options |
|-----------------------------|----------------------------|-------------------|--|--------------------|
| function | pressure regulation | bar | HPP-3 5-100 | without valve body |
| | Kv value | m ³ /h | max. 6,0 | |
| media | abrasive media | | gaseous - liquid - highly viscous - contaminated | version available |
| | flow direction | A ⇌ B | as marked | |
| operating time | ms | < 200 | | |
| media temperature | °C | 0 to +60 | | |
| ambient temperature | °C | 0 to +50 | | |
| approvals | | | | |
| mounting | | | | mounting holes |
| weight | kg | HPP-3 4,4 | | HPP-3 3,3 |
| additional equipment | | | | |


electrical specifications

| | nominal voltage | U _n | 24V DC | options |
|------------------------------|-----------------|--|---------------------------------|------------------------------|
| power consumption | DC | 4,8 W | | special voltage upon request |
| | AC | pick up 11,0 VA holding 8,5 VA | | special voltage upon request |
| protection | IP 65 (P54) | acc. DIN 40 050 | | |
| energized duty rating | ED | 100% | | |
| connection | | plug acc. DIN EN 175301-803 form B | | |
| additional equipment | | illuminated plug with varistor | | |
| optional | M12x1 | connector acc. DESINA | | connector acc. VDMA |
| coil | | 3 positions x 90° / wire diameter 6-8 mm | | |
| max. temperature | media | 60°C | | |
| | ambient | 50°C | | |
| explosion proof | EEx m II T5 | nominal voltage U _n | direct current 24 V | 3,25 W |
| | | power consumption | alternating current 230 V 50 Hz | 2,90 W |

pneumatic specifications

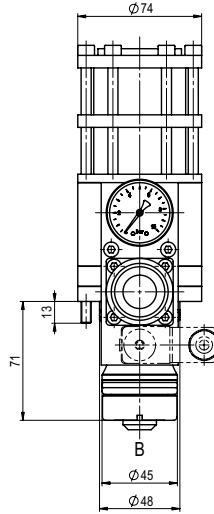
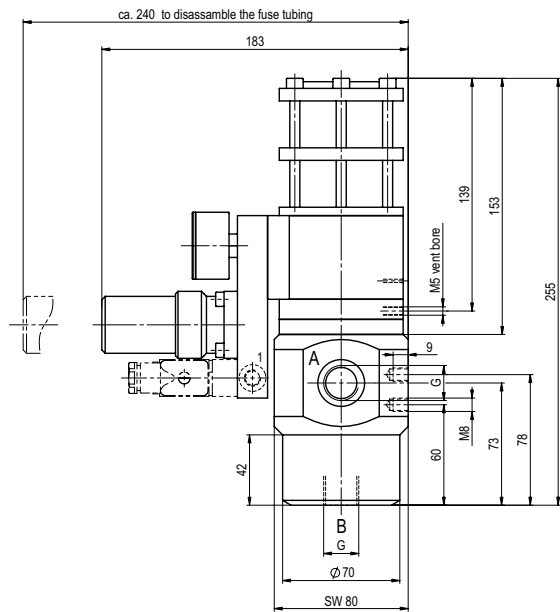
| | actuation pressure range | bar | see actuation pressure-diagram | options |
|------------------------|--------------------------|-------|---|---------|
| air consumption | | | DIN ISO 8573-1 grade of compressed air quality 5/4/3 | |
| control | | | preferably 3/2-way pilot valve during low pressure circulation mode | |
| actuator ports | 1 | G 1/8 | | |

 The valves' technical design is based on media and application requirements. This can lead to deviations from the general specifications shown on the data sheet with regards to the design, sealing materials and characteristics.

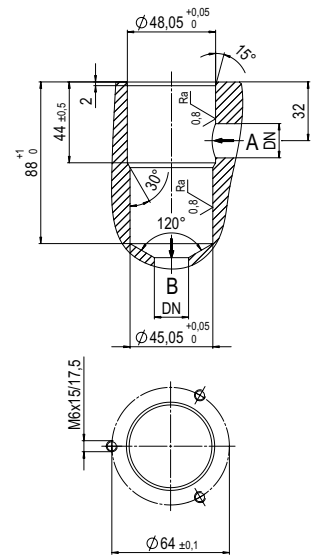
 If order or application specifications are incomplete or imprecise there exists a risk of an incorrect technical design of the valve for the required application. As a consequence, the physical and / or chemical properties of the materials or seals used, may not be suitable for the intended application.

■ specifications not highlighted are standard
 ■ specifications highlighted in grey are optional

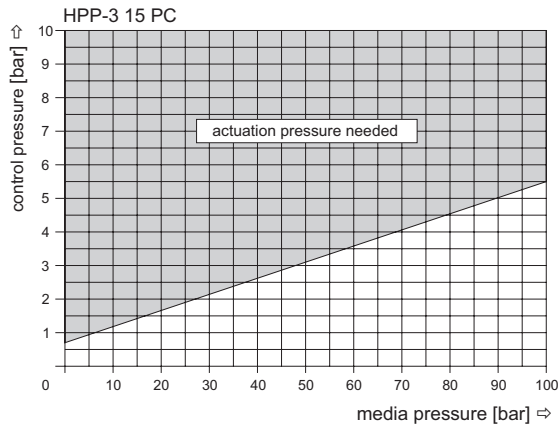
type HPP-3 15 PC



drilling design for cartridge



actuation pressure-diagram



The application-specific layout relating to temperature, pressure conditions, switching behavior, media and its consistency may restrict the range of use or necessitate relevant modifications to materials used and seal arrangements.

Rights reserved to make technical alterations • Not responsible for printing errors • Detailed drawings can be obtained upon request