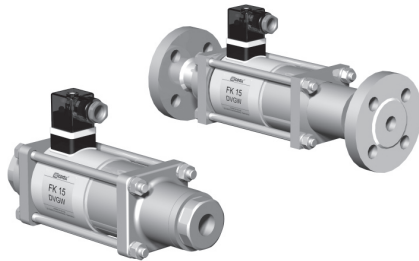
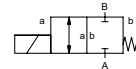



coaxial valve

type MK 15 DVGW FK 15 DVGW



2/2 way valve direct acting
pressure range PN 0-40 bar
orifice DN 15 mm
connection thread/flange
function valve normally closed
symbol NC



 Above stated body materials refer to the valve port connections that get in contact with the media only!

design pressure balanced, with spring return
body materials Ⓢ DVGW

valve seat synthetic resin on metal
seal materials FPM, PTFE

details needed

- orifice
- port
- function NC
- operating pressure
- flow rate
- media
- media temperature
- ambient temperature
- nominal voltage

general specifications


options


ports	MK threads G 3/8 - G 3/4	
	FK flanges PN 40	
function	NC	
pressure range	bar 0-40	
Kv value	m³/h 4,8	
vacuum	leak rate	
pressure-vacuum	P ₁ ↔ P ₂	
back pressure	P ₂ > P ₁	
media	combustible gases according G 260	
abrasive media		
damping	opening closing	
flow direction	A ↔ B as marked	
switching cycles	1/min 200	
switching time	ms opening 80 closing 80	
media temperature	°C DC: -15 to +80	
	AC: -15 to +80	
ambient temperature	°C DC: -15 to +80	
	AC: -15 to +80	
limit switches		inductive available
manual override		
approvals	DVGW DIN 3394-1	
mounting		mounting brackets
weight	kg MK 3,8 FK 5,0	
additional equipment		

electrical specifications

options

nominal voltage	U _n 24 V DC		special voltage
	U _n 230 V 40-60 Hz AC		special voltage
actuation	DC direct-current magnet		
	AC direct-current magnet with integrated rectifier		
insulation rating	H 180°C		
protection	IP65		
energized duty rating	ED 100%		
connection	plug acc. DIN EN 175301-803 form A, 4 positions x 90° / wire diameter 6-8 mm		terminal box M16x1,5
optional additional equipment	illuminated plug with varistor		
current consumption	N-coil		
	H-coil 24 V DC 2,30 A		
	230 V 40-60 Hz AC 0,24 A		
explosion proof	E Ex e II T4 nominal voltage U _n V-DC	24 48 98 110 200 220	
	nominal current I _n A	1,20 0,60 0,30 0,28 0,15 0,14	
	media temperature °C	-15 to +40	
	ambient temperature °C	-15 to +40	
limit switches	AC connection		with separate rectifier
	inductive (I)		normally open-PNP
	inductive (B)		normally open-PNP
	Namur		circuit amplifier

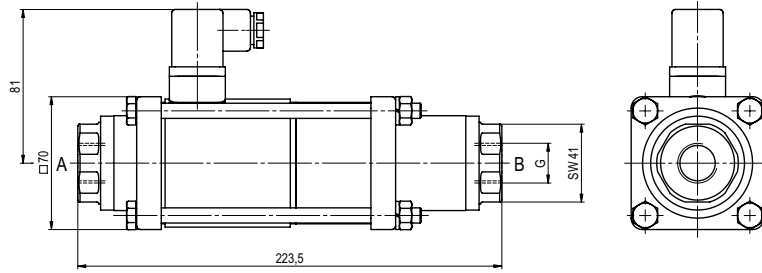
 The valves' technical design is based on media and application requirements. This can lead to deviations from the general specifications shown on the data sheet with regards to the design, sealing materials and characteristics.

 If order or application specifications are incomplete or imprecise there exists a risk of an incorrect technical design of the valve for the required application. As a consequence, the physical and / or chemical properties of the materials or seals used, may not be suitable for the intended application.

■ specifications not highlighted are standard
 ■ specifications highlighted in grey are optional

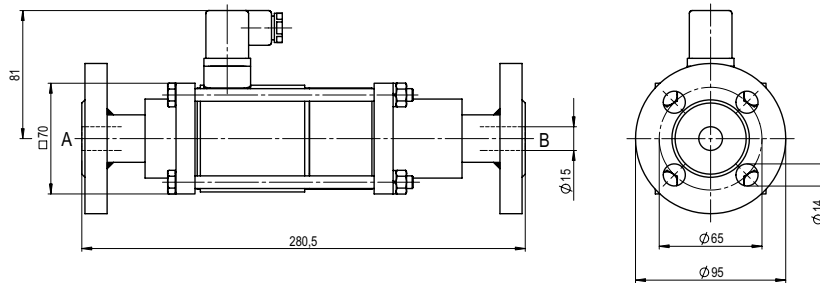
type MK 15 DVGW

function: **NC**
closed when not energized



type FK 15 DVGW

function: **NC**
closed when not energized



The application-specific layout relating to temperature, pressure conditions, switching behavior, media and its consistency may restrict the range of use or necessitate relevant modifications to materials used and seal arrangements.

Rights reserved to make technical alterations • Not responsible for printing errors • Detailed drawings can be obtained upon request